



Ford Transit AWD 350 Chassis, RVIA  
Certified, Off-the-Grid Capable

[www.goantero.com](http://www.goantero.com)

303.301.7550 [info@goantero.com](mailto:info@goantero.com)



MAKE THE MOST OF

# Every moment

Purpose-built to take you just about anywhere you want to go, the Antero Adventure Van is the perfect vehicle for YOUR adventure. Upfitted with smart features everywhere you look, we have crafted a vehicle that is as functional as it is beautiful.



Comfortable



Durable



Functional



The Ford Transit chassis gives you the best of both worlds - proven quality at a price you can afford, allowing you to focus on all the adventures yet to be had.

#### Standard Chassis Features:

148" High Roof Ford Transit 3500  
3.5L Ecoboost V6 (gas) AWD  
310 hp @ 5,000 rpm  
10 Speed Transmission  
25 Gallon Fuel Tank  
Rain Sensing Window Wipers  
Auto High Beam Headlamps

Forward Collision Warning  
Hill Start Assist  
Lane-Keeping System  
Rear View Camera with Trailer Assist  
Selectable Drive Modes  
Side Wind Stabilization  
Trailer Brake Controller (Optional)

# Features

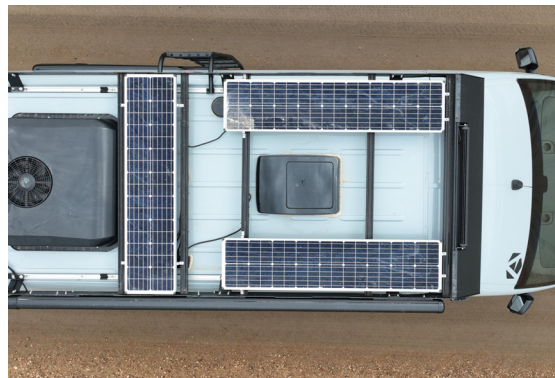


Our class B RV is in a class of its own. Explore the features that set us apart from the rest.



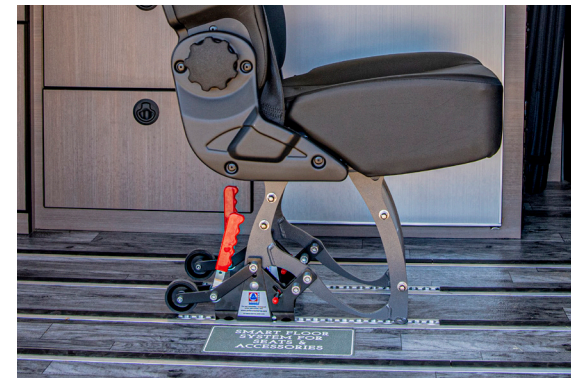
## Multi-function Murphy Bed

The bed is the heart of the van, but why can't it do more? Ours converts from SLEEP to EAT to WORK in seconds. The design is easy to lift, and takes up very little cargo space when stored. There is nothing else like it.



## The Off-Grid Power System

We designed a right-sized power package boasting 420 Amp hours, 270 watts of Rooftop solar, 3,000 Watt Inverter and Solar Expansion Port. You can stay for days wherever the road or trail takes you.



## Smart Floor System

With full length L-track insets, we allow you to configure your seating and accessories any way you want to. Seats, bikes, tie down points. The sky is the limit.

Modular campervan toilet (comes standard) secures to this floor system.



## Not to mention all of the other things you expect (and then some) come standard:

- ✓ 12 volt AC unit
- ✓ Powered awning
- ✓ Standalone Bluetooth audio system
- ✓ Onboard air compressor
- ✓ Upgraded off road wheels and tires
- ✓ 4.6 cu. ft. refrigerator
- ✓ Fuel-fired coach heater with automatic altitude adjustment
- ✓ LED site lights
- ✓ Roof rack system
- ✓ Modular campervan toilet compatible with smart floor system
- ✓ Vented side windows
- ✓ Bug screens and privacy screens
- ✓ External shower station
- ✓ Pivoting driver and passenger seats
- ✓ Side steps
- ✓ 2.5 gallon hot water tank
- ✓ Indoor and outdoor water access
- ✓ Microwave, induction cooktop, and bar sink
- ✓ Roof vent
- ✓ Custom interior lighting kit
- ✓ Food and cookware storage
- ✓ Survival first aid kit
- ✓ Insulated window covers for windshield, cab, galley, sliding door and bed popouts

# Customize on the fly



Every inch of the interior has been designed to maximize usability, durability and flexibility.



Sleeping



Dining



Garage



Accessory Mounts

## Exterior Color

 CARBONIZED GREY

 AVALANCHE GREY

 HOOD WRAP  
(COMES STANDARD)



# Proven Quality

When it comes to design, we don't settle for the status quo, but we infuse passion and purpose into every aspect of design and functionality.

## CHASSIS

- Ford Transit
- 3.5 L 6-Cylinder Eco Boost Gas AWD  
310 hp / 400 ft lbs torque
- 97.4" wide / 235.5" long / 119" height

## EXTERIOR

- Upgraded Wheels and Tires
- Extended Running Boards
- Custom Roof Rack with Front LED Light Bar,  
LED Side Entry Light, LED Rear Light Bar
- Wind Sensing Awning
- Roof Access Side Ladder
- Tow Hitch Step
- Hood Wrap

## INTERIOR

- Exclusive Smartfloor Foundation flooring and  
track system
- Swivel Leather Driver and Passenger Seats
- Charging Center with USB and 12 Volt
- Flexible Storage
- Built in Air Compressor w/ Rear Port
- Rear Speakers and Bluetooth Sound System
- Insulated Window covers: Windshield, Drivers,  
Passengers, Galley, Sliding Door and Flarespaces

## WARRANTY

- Industry leading 2 year/24k miles

## HEATING AND COOLING

- 12 Volt Air Conditioning
- Fuel Fired Heater with Thermostat and  
Altimeter for Efficient Burn
- Roof Vent
- Sliding Door Bug Screen
- Rear Bug and Shade Screen

## POWER SYSTEM

- 3,000 Watt Inverter
- 105 Ah, 12 Volt Li-Ion Coach Batteries,  
420 Ah total (4 qty)
- 90 Watt Roof Mounted Solar Panels (3 qty)
- Solar Expansion Port
- Auxiliary Chassis Start System

## PLUMBING

- 18 gal Fresh
- 11 gal Grey
- 2.5 gal Bosch Hot Water Tank
- Portable Cassette Toilet with Ottoman
- Tank Monitoring System
- Exterior Shower Port

## GALLEY

- Solid surface counter tops
- Induction cooktop
- 4.6 cu ft refrigerator / freezer
- Deep sink with spray faucet and cutting board
- 700 watt microwave
- Custom cabinetry
- Magnetic steel wall panel



After thorough evaluation, Ford Motor Company has determined that Antero provides outstanding service and superior quality processes. We are listed as a Qualified Vehicle Modifier by meeting high levels of engineering, the manufacturing process, quality control, and adherence to Ford Motor Company QVM guidelines.



Antero is certified compliant with RVIA standards for recreational vehicles. You can feel at ease knowing your van is up to code, safe and ready for any adventure.




#### CONTACT TO LEARN MORE


 [www.goantero.com](http://www.goantero.com)

 [info@goantero.com](mailto:info@goantero.com)

 303.301.7550

#### CONNECT WITH US

 [goantero](https://www.instagram.com/goantero)

 Antero Adventure Motors  
#ExpandYourMap  
#GoAntero

